

PROLONGS THE QUALITY  
OF SKIN **LIFE**



**cimel™**  
SUNSCREEN



**cimel™**  
CLARIFYING CREAM



**cimel™**  
DRY SKIN REPAIR



**cimel™**  
ACTIVATOR

**cimel™**  
MAINTENANCE

**Derma Beauty inc**

325 - 650 Lawrence Avenue West Toronto, Ontario M6A 3E8  
P: +1 647.726.0666 / +1 416.781.2149  
2680 Matheson Blvd East - Suite 102, Office#6 - Mississauga, ON,  
L4W 0A5 Canada. P: +1 905.267.8536

EXCLUSIVE AGENT WORLDWIDE | [www.dermabeautyinc.com](http://www.dermabeautyinc.com)



#dermabeautyinc

All rights reserved © Derma Beauty Inc. 2017

innoscience

08950 Esplugues | Barcelona | Spain  
[www.innoscience.es](http://www.innoscience.es)

**cimel™**



PROLONGS THE QUALITY  
OF SKIN **LIFE**

**Derma Beauty inc**

Success comes with Vibrant Health & Energy

MANUFACTURED EXCLUSIVELY FOR DERMA BEAUTY INC  
| WORLDWIDE DISTRIBUTORS |

MENA  
EDITION

## CIMEL FACIAL TREATMENT

### ● DAY ① (TREATMENT DAY)

Clean and prepare the skin.

Apply **Cimel Activator** : The mask is applied for 2 to 8 hours (preferably at night)

Afterwards remove the mask .

Apply **Dry Skin Repair** and **Cimel Sunscreen** on daily basis **for the remaining of the week. (Activator is used once on the 1st day of treatment only).**

### ● WEEK ②

Apply **Cimel Maintenance** at night on **alternate** nights.

Use daily during the day, **Dry Skin Repair** and **Cimel Sunscreen**.

### ● WEEK ③

Apply **Cimel Maintenance** every night. (if tolerance is acceptable).

Use daily during the day, **Dry Skin Repair** and **Cimel Sunscreen**.

### ● WEEK ④

Apply **Cimel Maintenance** every night. (if tolerance is acceptable).

Use daily during the day, **Dry Skin Repair** and **Cimel Sunscreen**.

## CIMEL CLARIFYING CREAM FOR BODY SENSITIVE AREAS

### ● WEEK ①

Apply **Cimel Clarifying Cream** on alternate days.

Apply **Dry Skin Repair** on daily basis.

### ● WEEK ②

Apply **Cimel Clarifying Cream** every day.

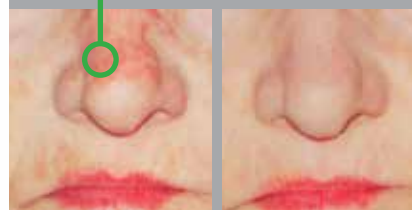
Use daily during the day, **Dry Skin Repair**.

Continue treatment for a period of 28 days.

Don't forget to check with your specialist !

CIMEL  
TREATMENT

MELASMA + LENTIGOS  
+ ACTINIC KERATOSIS



Before

After

AGING SPOTS



Before

After

POST-BURN PIGMENTED SCARS



Before

After

## HIGH SAFETY TREATMENT FOR: PHOTOAGING, MELANIC OR MELANO - HEMATIC PIGMENTATIONS & FACIAL SEBORRHEA

- Applicable to any skin phototype.
- Visible results in few days.
- Rejuvenation of the skin.
- High tolerance - high safety treatment.

Only a slight peeling occurs similar to what happens after a prolonged exposure to the sun.

### Cimel treats cases like:

The series of changes that take place in the organism as a result of the passage of time are known as **cutaneous aging**.

The **photoaging of the skin**, caused by an excess of exposure to the sun throughout life, and the spots that appear due to an increase in pigmentation, are related to the increase of melanin caused by the hyperactivity of the skin's melanocytes. In general these are difficult to deal with and it is only through a modification of the melanogenesis that it is possible to eliminate certain melanogenic imperfections and pigmentations.

**Seborrheic skin** is characterised by a certain redness of the skin, an increase in the secretion of grease and pores that are more dilated than normal. This is a family characteristic, which can be aggravated by various factors, psychological, nutritional, hormonal, etc ...

Improve pigment spots on **intimate areas** and at same time acts delaying their appearance.



CLARIFYING CREAM FOR BODY  
SENSITIVE AREAS